

RoHS

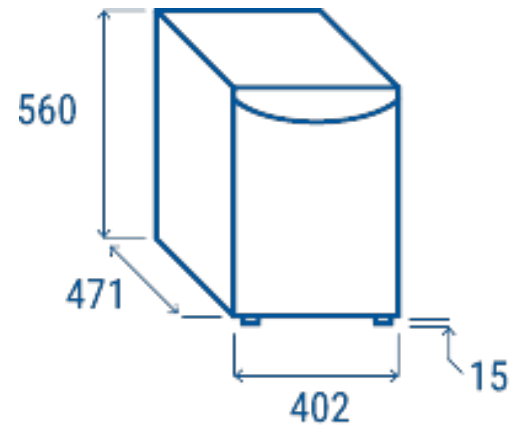


## Data sheet

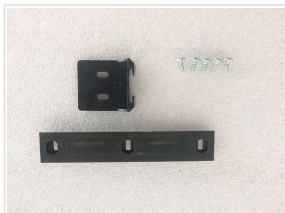
Depth	471 mm
Height	560 mm
Width	402 mm
Inner depth	255 mm
Inner height	455 mm
Inner width	312 mm
Noise level	N/A
KW/24h	0.7 Kw
Capacity	40 L
Consumption	65 W
Net Weight	18 Kg
Temperature	+5° ~ +12°C

## Technical features

- 40 Lt. Absorption Minibar
- Absorption cooling with NH3 (ammonia)
- Silent operation
- Low maintenance
- Foaming Agent Cyclopentane (45mm per side)
- Interior LED light
- Removable Gasket
- Reversible door
- Lock fitted as standard
- Door shelves
- Adjustable shelves: 2 Pcs
- Sliding door kit predisposition



Inner door rack



Sliding door kit



Inner LED light



Lock fitted as standard