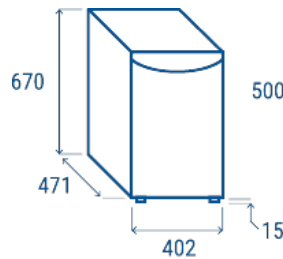




Technical features



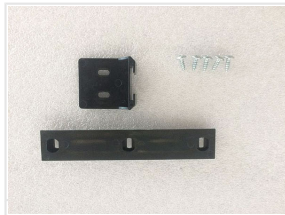
- 50 Lt. Absorption Minibar
- Absorption cooling with NH₃ (ammonia)
- Silent operation
- Low maintenance
- Foaming Agent Cyclopentane (45mm per side)
- Interior LED light
- Removable Gasket
- Reversible door
- Lock fitted as standard
- Door shelves
- Adjustable shelves: 3 Pcs
- Sliding door kit predisposition

Data sheet

Depth	471 mm
Height	670 mm
Width	402 mm
Inner depth	250 mm
Inner height	565 mm
Inner width	312 mm
Noise level	N/A
KW/24h	0.9 Kw
Capacity	50 L
Consumption	90 W
Net Weight	20.5 Kg
Temperature	+5° ~ +12°C



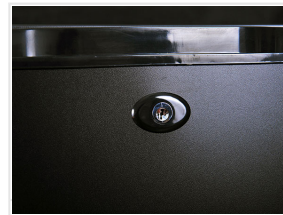
Inner door rack



Sliding door kit



Inner LED light



Lock fitted as standard