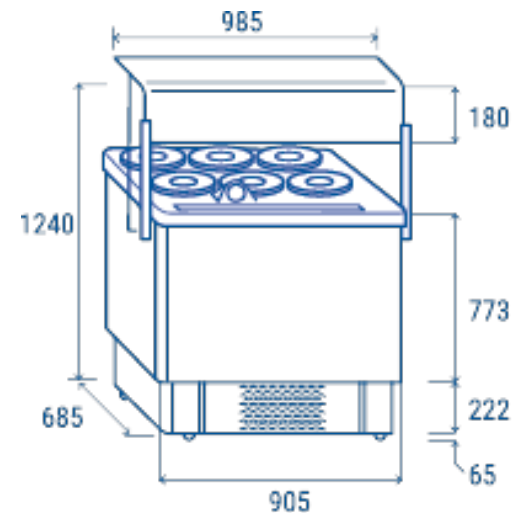


RoHS  **Data sheet**

Depth	685 mm
Height	1240 mm
Width	985 mm
Inner depth	560 mm
Inner height	565 mm
Inner width	785 mm
Noise level	45 dB(A)
KW/24h	2.49 Kw
Capacity	256 L
Consumption	271 W
Net Weight	56 Kg
Temperature	-5° ~ -20°C

Technical features

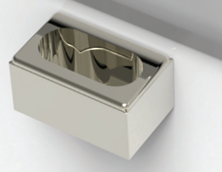
- 400 Lt. Ice cream scooping cabinet
- White coated steel for external and internal
- Static cooling
- Manual defrost
- Analog thermometer
- Foaming Agent Cyclopentane (60mm per side)
- Service plan in plexiglass
- Scoop cleaner in stainless steel fitted as standard
- Taste/Price advertisement fitted as standard
- Lid included (6 Pcs) / Pans not included
- LED light assembled on the plexiglass (Optional)
- N.4 Castor (N.2 in the front with brake)



Castor included in the packaging (To be assembled)



Analogic thermometer



Scoop cleaner in stainless steel